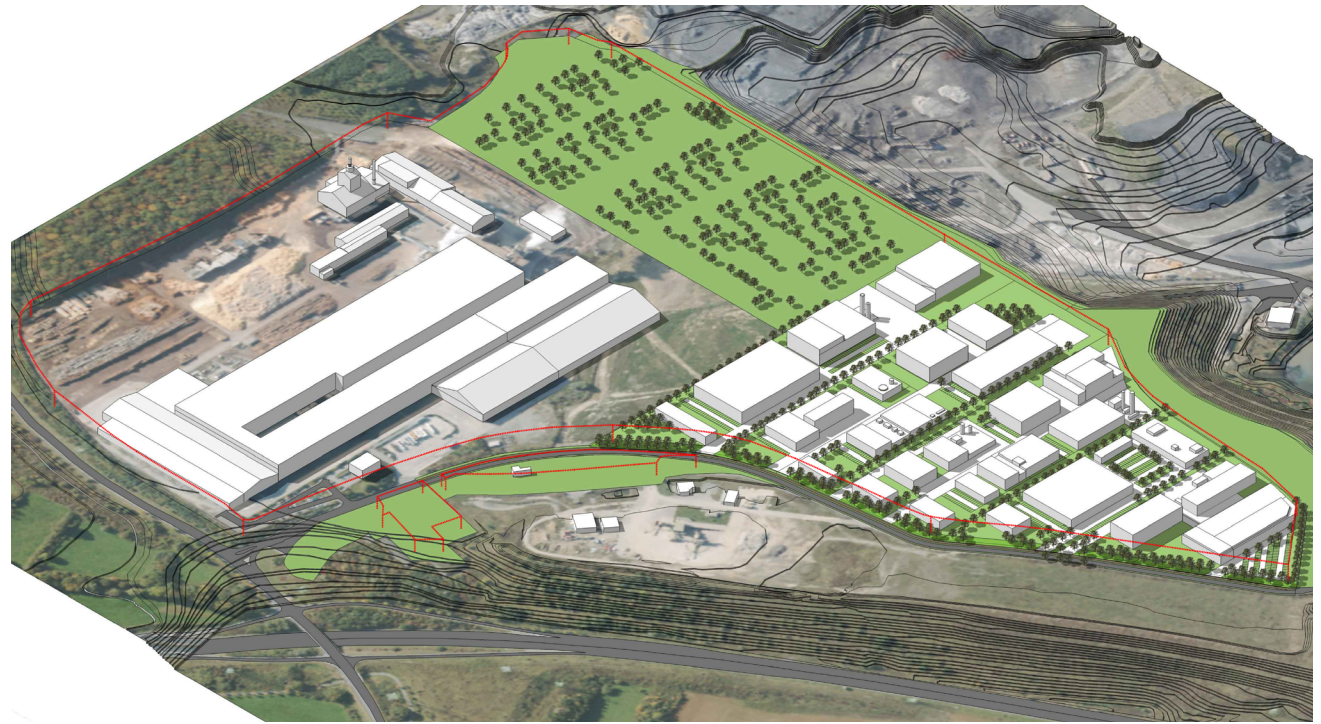


## PAP 'Gadderscheier', Sanem (L)

project	<b>Development of a nationally designated industrial park of national importance: The industrial park 'Gadderscheier'</b>
client	<b>Ministère de l'Economie (L) - Ministry of economy, Luxembourg</b>
services	<b>WW+, Esch-sur-Alzette (LUX) / Trier (GER) Masterplan (Plan Directeur), development plan (PAP)</b>
traffic planning	in cooperation with Schröder & Associés, Luxembourg (L)
facts	<b>- expansion of Kronospan Luxembourg S.A. - settlement of other companies</b>



### dates and numbers

total area	<b>64,4 ha</b>
SOI	<b>0,75</b>
FSI	<b>10,00</b>
planning	<b>11/2008 - 04/2013</b>



Plan Directeur (Masterplan)