

# Parking Lot Neipperg, Luxembourg (LUX)

project **Renovation and refurbishment project of 'Parking Neipperg' and incorporation of a restaurant**

client **Administration Communale de la Ville de Luxembourg, (LUX) / public client**

services **WW+, Esch-sur-Alzette (LUX) / Trier (GER)  
architecture OAI services according to HOAI LPH 1-9**

civil eng. in cooperation with  
RWConsult, Luxembourg (LUX)

technical eng. Goblet Lavandier, Luxembourg (LUX)

further partners Eneco, Luxembourg (LUX)  
Luxcontrol, Esch-sur-Alzette (LUX)  
PROgroup, Windhof (LUX)

rendering rendertaxi, Aachen (GER)

- facts
- upgrade of the train station area
  - new façade
  - existing kiosk will be converted into an upmarket brasserie
  - 19 split-level parking decks
  - parking guidance system differentiated for user groups in accordance with diagram and signage guidelines of the City of Luxembourg
  - also bicycle stands, 20 parking spaces for electric vehicles, adaptation of handicap-parking spaces, parking spaces reserved for women
  - rainwater use system, photovoltaic and solar heating system

dates and numbers

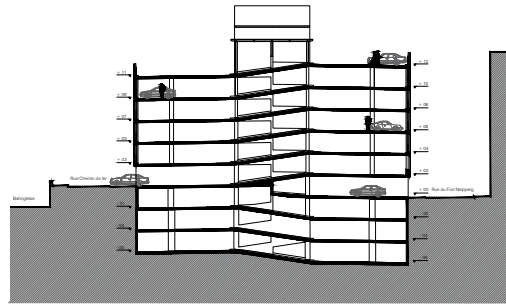
gfa **21.818 m<sup>2</sup>**  
gv **49.701 m<sup>3</sup>**  
net construction c. **13.282.396 €**  
total gross costs **15.540.403 €**  
start of planning **09/2014**  
realisation **03/2018 - 12/2019**

## Topographical conditions

The 'Parking Fort Neipperg' is located in Luxembourg City's 'Quartier Gare' (station area), in direct proximity to the central railway station, the Carré Rotondes, and the shopping streets of 'Avenue de la Gare' and 'Avenue de la Liberté'.

## Guiding principle

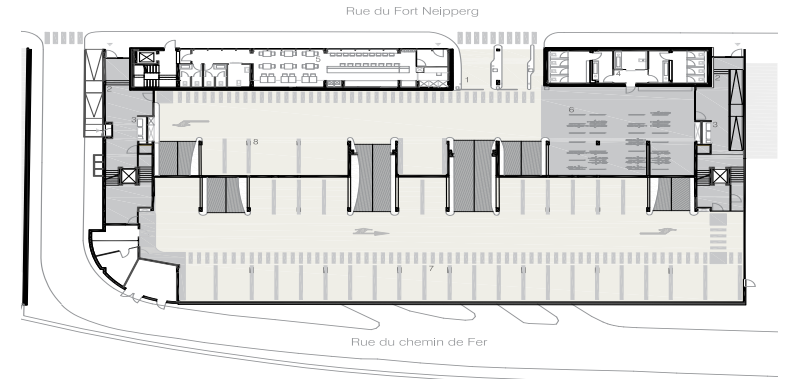
The initial planning concept is to enhance the building by increasing its user friendliness, adapting the access paths and restoring the building services, the lighting, the ventilation, etc.



section



site plan



ground floor





### Car park

At the request of the City of Luxembourg, the ageing car park is being refurbished and renovated. The car park will also feature a restaurant looking out onto 'Rue du Fort Neipperg'.

The car park, which was erected in a concrete skeleton construction with nineteen split-level parking decks (13 above ground and 6 under ground), will undergo a complete concrete refurbishment. The entire electrics, ventilation technology and lighting will also be replaced and an internal parking guidance system will be installed, differentiated for user groups and based on the revised guidelines for diagrams and signage in Luxembourg City's car parks, which lay down the colours, pictograms and orientation within car parks, etc.

Since the existing exposed aggregate concrete façade no longer provides any impact protection and a retrofitted impact protection would result in shortening the parking space depths or the

lane widths, the existing façade will be dismantled and replaced by a façade that will enhance the streetscape. The two entranceways for pedestrians are to be complemented by a third on 'Rue de Chemin de Fer'. The vertical pedestrian access within the building no longer meets today's requirements. The two lifts are not adapted to the needs of the disabled and stop only at parking levels oriented towards 'Rue du Fort Neipperg'. This will be changed thanks to the reorganisation of the two stairwells. The new accessible lifts of the stairwells will stop at every level in future. The renovation will also see the sanitary facilities being located closer to the entrance, so that pedestrians can safely reach these without having to cross paths with motorised traffic. The area that will be freed up thanks to the restructuring will be converted into a restaurant that will incorporate the currently empty kiosk and existing bar.

The parking will also house bicycle stands and 20 parking spaces for electric vehicles. Parking spaces reserved for women will also be made available and the number of PRM (people with reduced mobility) parking spaces will be adapted to today's standards.

On the roof, a steel construction will be erected between the stairwells to collect the rainwater for the rainwater use system and serve as a surface for a photovoltaic and solar heating system.

### Restaurant

The restaurant looks out onto 'Rue du Fort Neipperg' and is located between the access and entrance 2, respectively the thoroughfare to 'Rue du Chemin de Fer'. The restaurant, in the style of a brasserie, will extend over three levels.