

## Ateliers Kräizberg, Dudelange (LUX)

Project	<b>Conservation, extension and refurbishment of the Kräizberg fund disabled person's workshops</b>
Client	<b>Administration des bâtiments publics, Luxembourg (LUX), public</b>
Services	<b>WW+, Esch-sur-Alzette (LUX) / Trier (GER) architecture OAI services according to HOAI LPH 1-9</b>
Measurement/civil. Techn. engineering	BEST Ingénieurs, Luxembourg (LUX) Goblet Lavandier, Luxembourg (LUX)
Dates and numbers	
gfa	<b>14.759 m<sup>2</sup></b>
gv	<b>56.236 m<sup>3</sup></b>
Construction costs	<b>ca. 35.000.000 € gross</b>
Start of planning	<b>2011</b>
Realisation	<b>Beginning of 2022 - End of 2028</b>

### Background

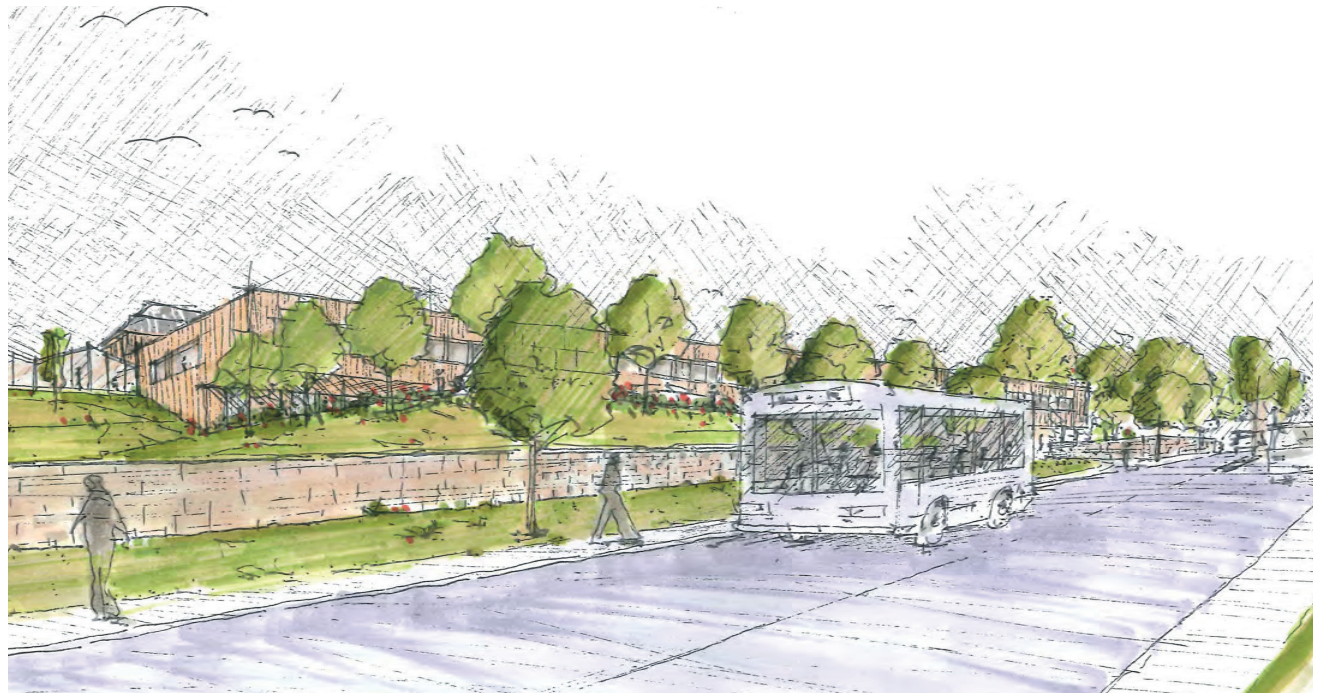
The 'Ateliers Kräizberg' site was the family residence of the director of the ARBED, Mr. Emile Mayrisch, at the beginning of the last century. The estate extended over an area of about 5 hectares. The buildings were designed by the Flemish architect Octave Van Rysselberghe. In the spring of 1912, a children's home was opened on the estate, which offered a place of rest to physically weak children. In December 1977, this children's home was closed. The site was then acquired in December 1978 by the 'Ligue pour l'aide aux infirmes moteurs cérébraux' (League for assistance to persons disabled by cerebral palsy) and, with the help of the State, was converted in 1979 to the professional integration site 'Ateliers Kräizberg S.C.' of the greater Kräizberg Foundation.

### Central theme

The initial planning concept is to spatially expand the disabled persons' workshops and to create a new unit that can accommodate additional functions and offer more people with disabilities a place to work and to undergo therapy. The space allocation program worked out with the user is summarized in a design concept and implemented through multi-phase planning. Existing buildings are restructured according to a modern and disabled-friendly concept. They are to be carefully restored, together with the historic park. The new buildings fit into the overall system as a link to a future-oriented space. Fewer materials are used in the new buildings and accessible interior furnishings are planned for people with disabilities. The unfinished walls and ceilings with exposed utilities deliberately underpin the character of the workshop. The harder materials of glass and concrete dominate. In the living areas and the training rooms, i.e. areas that are also frequented outside of working hours, wood is added as a softening element. This ensures a warm and friendly atmosphere, which invites people to linger and relax during breaks. The training rooms are equipped with an acoustically effective suspended ceiling to avoid any noise interference and to create a pleasant learning environment. Individual specialized departments feature consistent color concepts as well as an integrated guidance system. In accordance with Ateliers Kraizberg's comprehensive energy concept, there is a deliberate use of robust, durable and sustainable materials that are easy to maintain and remain attractive over a long period of time. **The workshops for people with disabilities are comprised of a general area with visitor's shop, administration, logistics center, medical service, therapy center, training center, kitchen with cafeteria and day care center. There are also facilities for developing manual skills for arts and crafts, printing, gardening, pottery and carpentry.** Up to 300 people with and without disabilities work on site. The day care program has a capacity of around 40 people.



Aerial view



Perspective Route de Zoufftgen

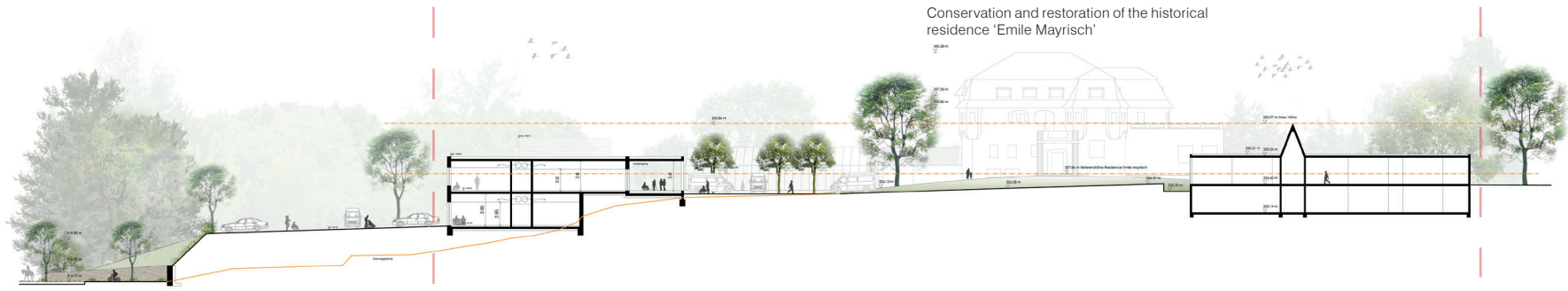


Elevation Route de Zoufftgen



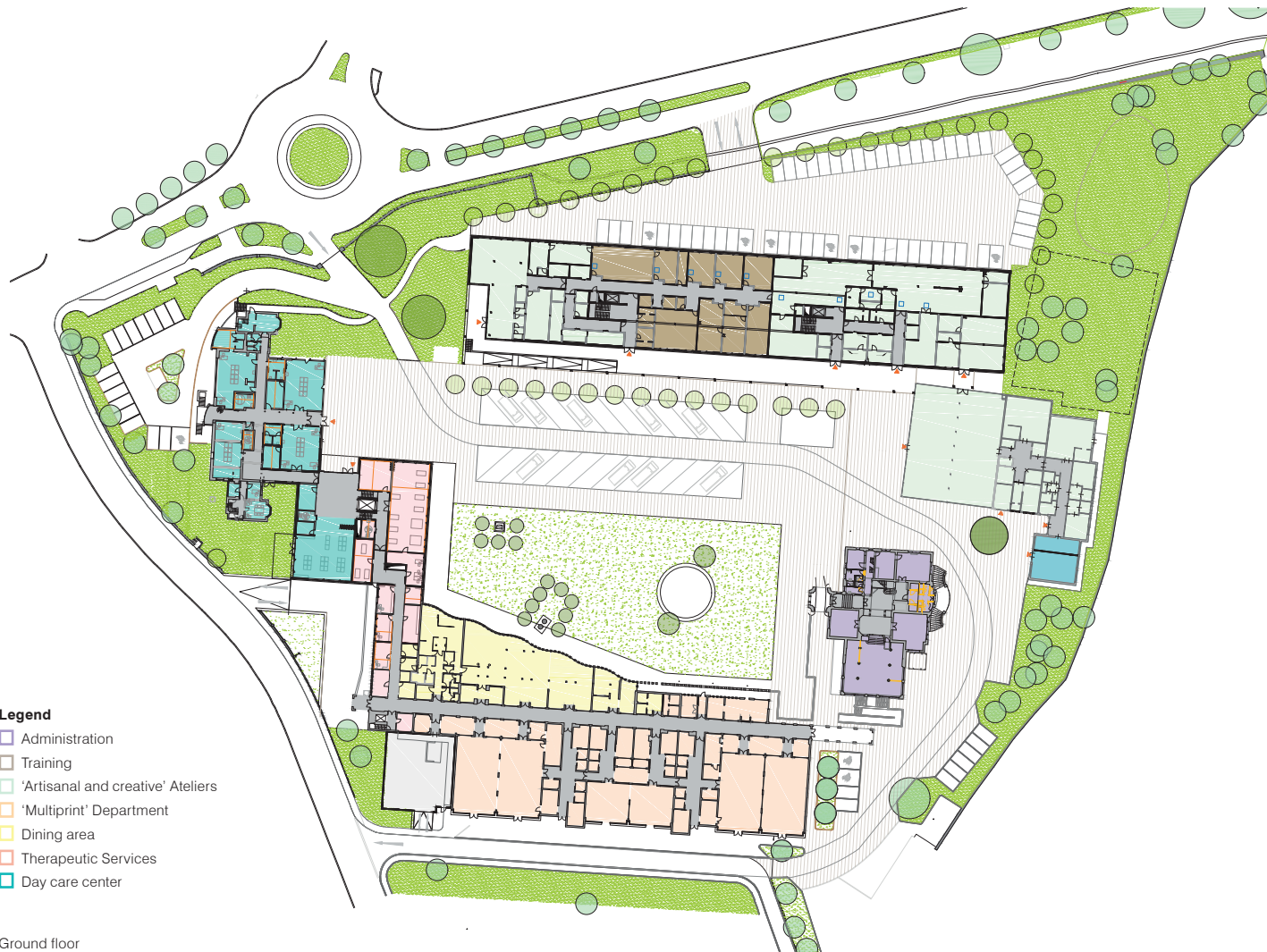
Site plan - ground floor

Conservation and restoration of the historical residence 'Emile Mayrisch'



Section

1. Building section - New construction of the Ateliers



**Legend**

- Administration
- Training
- 'Artisanal and creative' Ateliers
- 'Multiprint' Department
- Dining area
- Therapeutic Services
- Day care center

Ground floor



Renovation, conversion of the residence 'Emile Mayrisch, 1911' in consultation with Site et Monuments Luxembourg

**Initial situation**

The workshops for the disabled "Ateliers Kräizberg S.C." of the Fondation Kräizberg are located at the entrance of Dudelange; in the east of the municipality, along the Route de Zoufftgen (CR 160) towards France. The site is partly located in an adjacent wooded area and in a zone designated as "Special Activity Kräizberg" (S.P.).

The following buildings already exist on this site:

1. the former residence of Emile Mayrisch (the training centre)
2. the Paerdstall/stables (the day care centre)
3. the administration
4. the workshops
5. the greenhouses
6. the former printing works

**Materials**

The interior areas of the new building composition are characterised by a reduction to a small number of materials for interior furnishings and are planned in accordance to the needs of the disabled. The floors in the corridors and studios are made of smoothed screed, which is very hard-wearing and requires little cleaning. The raw walls and ceilings as well as exposed technical equipment reinforce the impression of a large studio that only comes to life through its users. In the workshops, the rooms for concentrated work, the harder materials of glass and concrete dominate. In the common areas and training rooms, i.e. the areas that are also frequented outside of work activities, wood is added as a soft element, creating a friendly and warm atmosphere that invites people to linger and relax during work breaks. The training rooms are equipped with an acoustically effective suspended ceiling to avoid any adverse effects and to create a pleasant learning environment. The individual departments are characterised by a consistent colour concept in the sense of a holistic orientation system. In line with Ateliers Kräizberg's comprehensive energy concept, robust, durable and sustainable materials were deliberately chosen that are easy to maintain and remain attractive over a long period of time.